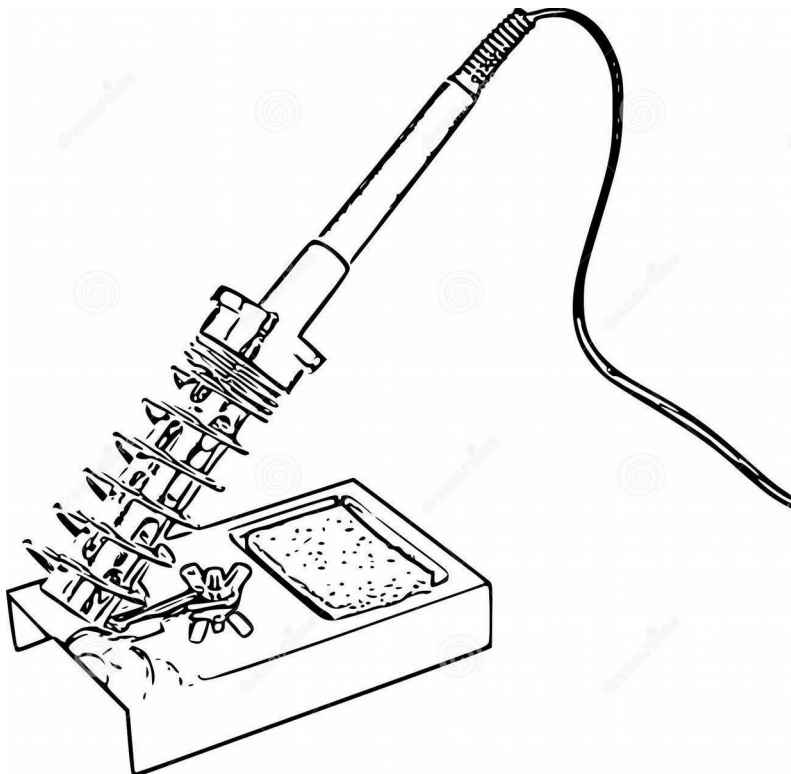


# Kit Building Committee Report



Rich “FluxMan” Mitchell, N3III  
Steve “FlipBits” Beckman, N3SB

August 13, 2018

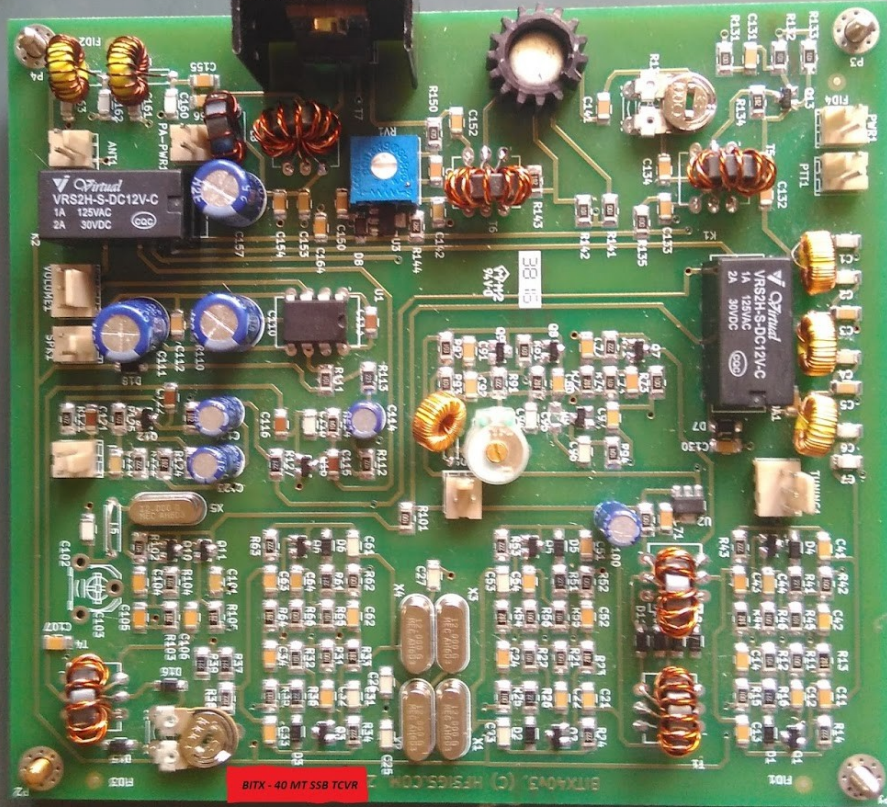
# Purpose of Committee

## **Let's build some stuff!**

- Improve Soldering Skills
- Learn About Electronics
- Improve Troubleshooting Skills

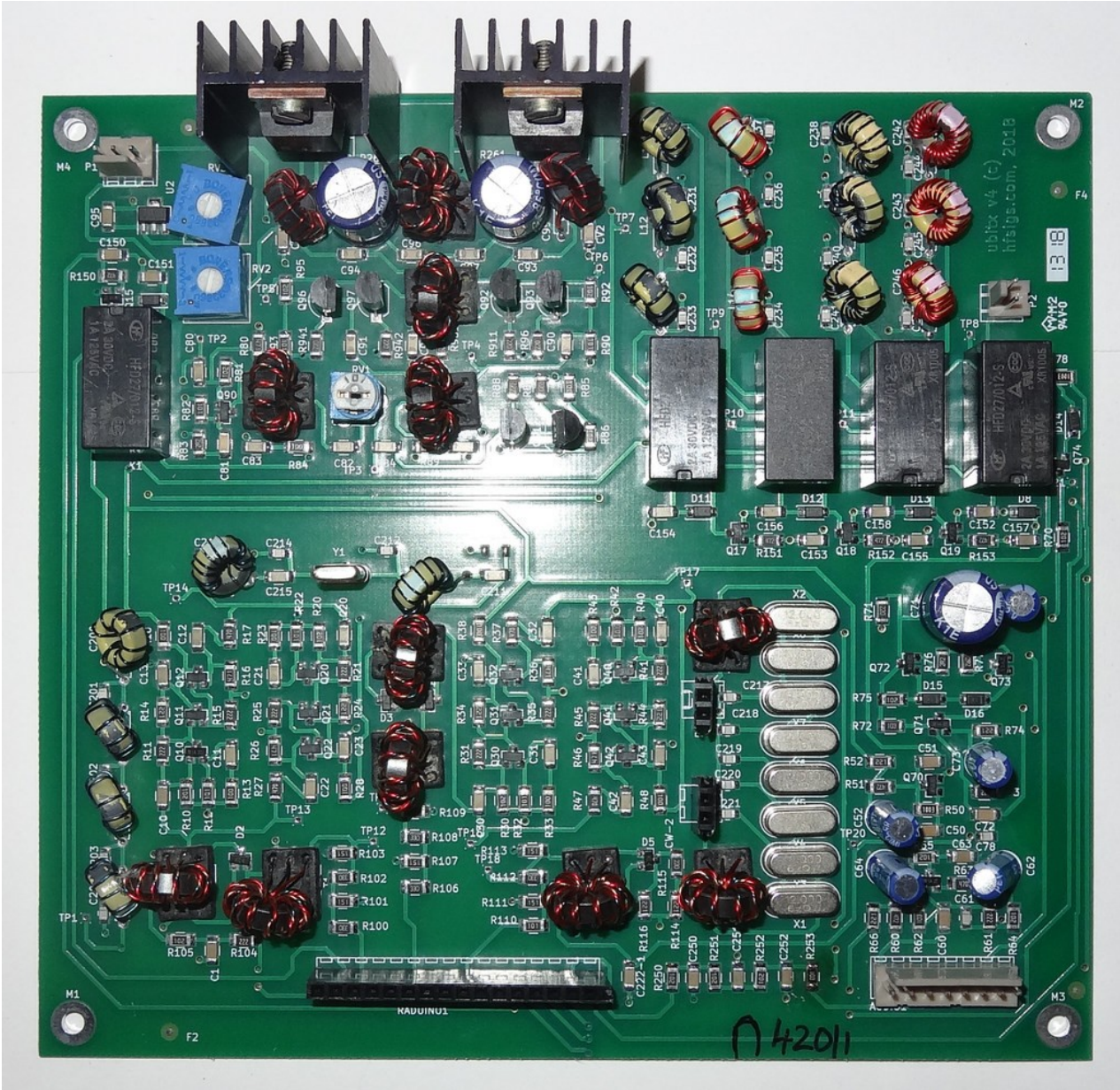
# First Project

- Let's build a transceiver!
- Desired qualities in first kit
  - Easy to build
  - Inexpensive
  - Sideband
- Committee recommending
  - 1) BITX40 – less expensive
  - 2) UBITX – more band coverage

[illegible]



# uBITX



# Surprise – Everyone Wants a uBITX!

Call Sign	BitX40	uBITX	Either	Case	Color
N8PK		2		2	
KE3FL		1			
AA3DA		1			
WB8YYY		1			
W3DVG		1			
W8IS		1			
K3TNV		1		1	
KB3SRU			1		
N3JET			1		
K3ZE		1			
WV3S		1		1	
KI4USA		1		1	Grey
KV3LPJ		1		1	
N3III		1		1	
N4EOC		1			
KC3FDL		1		1	Grey

# UBITX Case



# The Deal

- uBITX Board - \$119 including DHL Shipping
  - Normally \$139
- uBITX Case - \$62 including DHL Shipping
  - Normally \$72
- Deposit of \$50 for each is required



Stuff You'll Need to Build It

# Soldering Iron



\$99

# Solder



\$23

# Screwdrivers



\$16

# Wire Cutters



\$7

# Needle Nose Pliers



\$8



# Circuit Board Holder



\$13

# Magnifying Glasses



\$10

# Digital Voltmeter



\$30

Stuff You'll Need to Use It

# Power Supply



\$18

# Headphones - Optional



\$20



# External Speaker - Optional



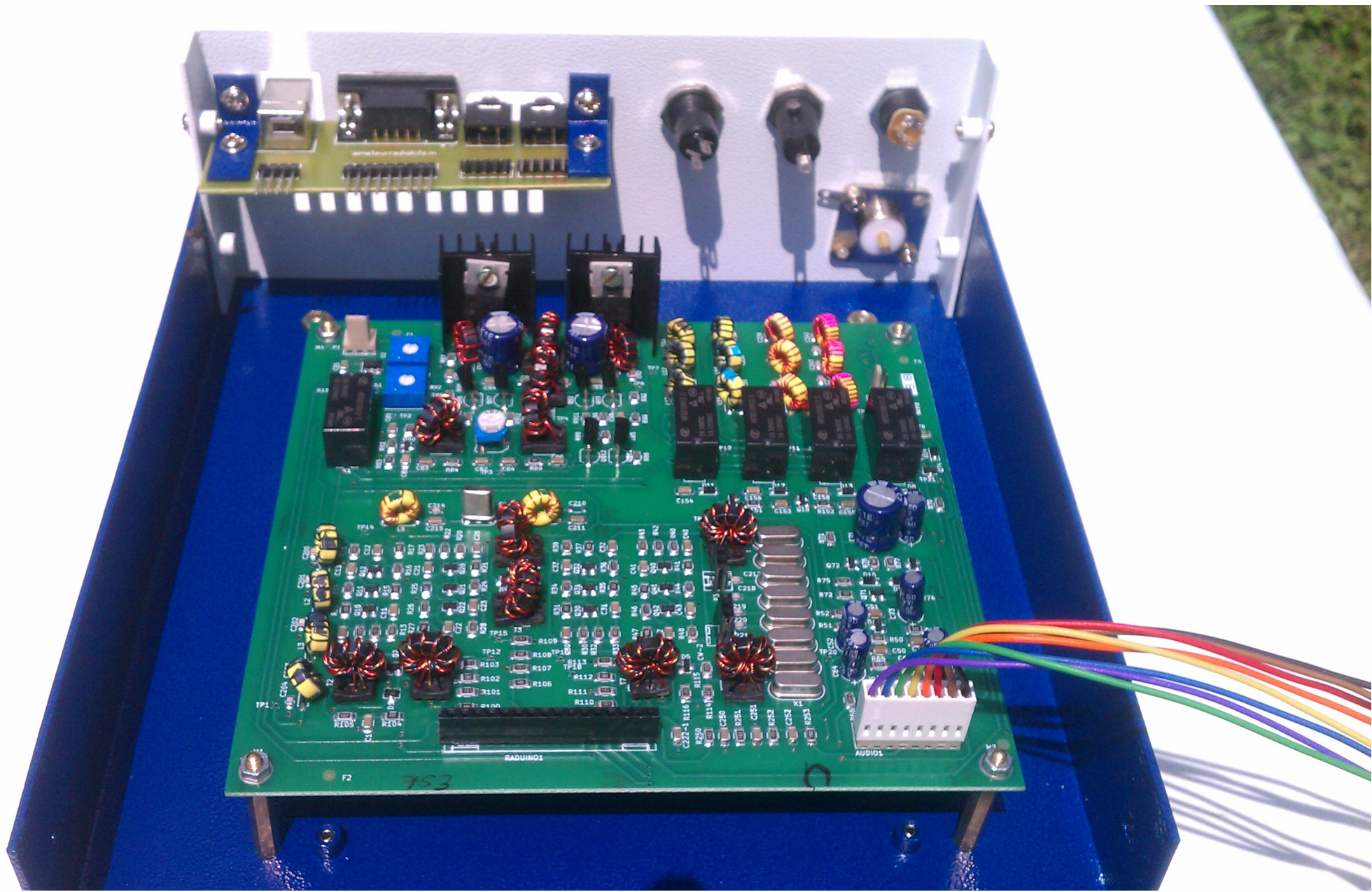
\$26

# Building Photos & Notes

# Front Panel

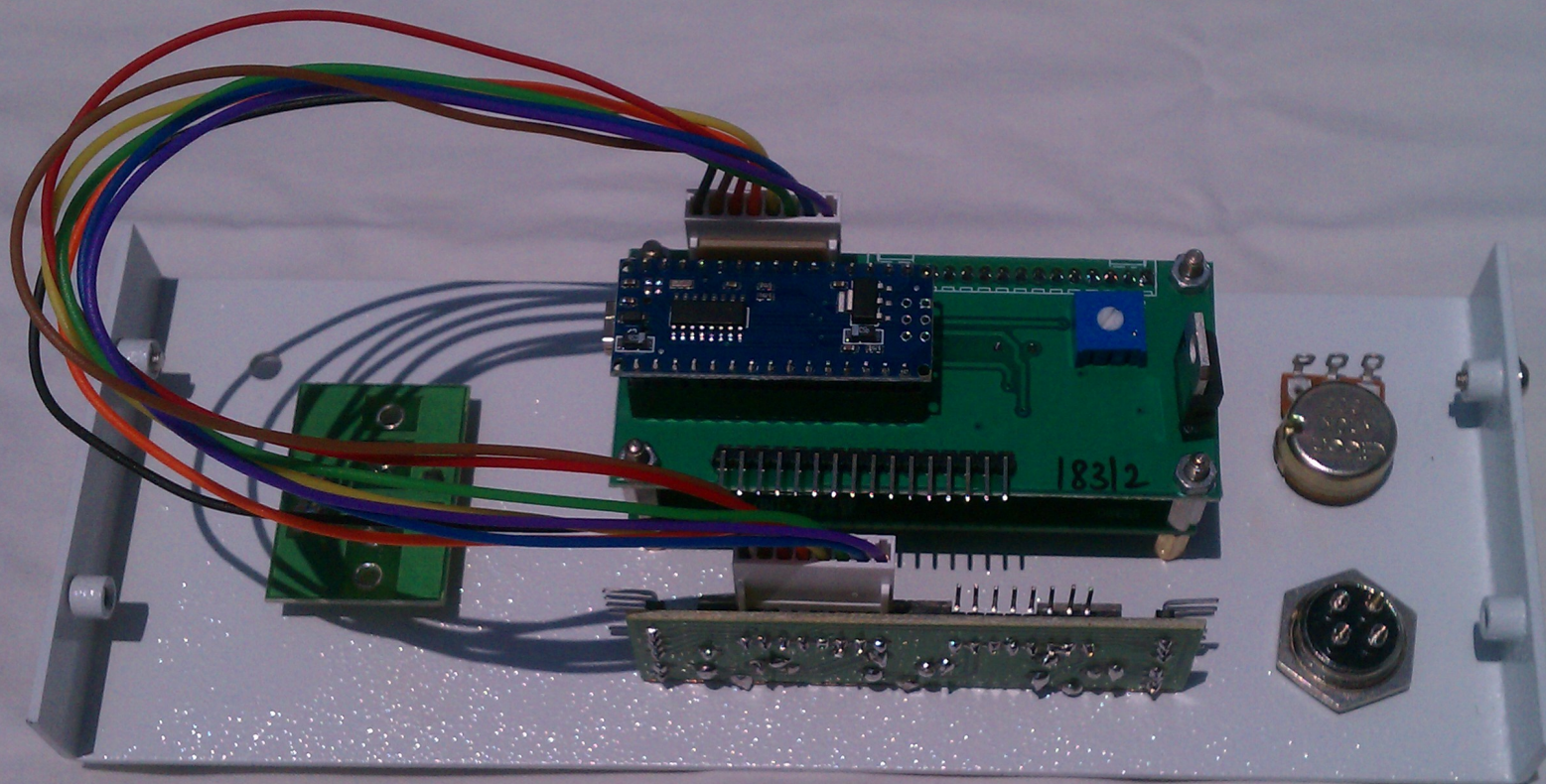








# Front Panel





FRONT PANEL STEREO  
SOCKET BOARD FOR UBITX  
UNIVERSAL CASE

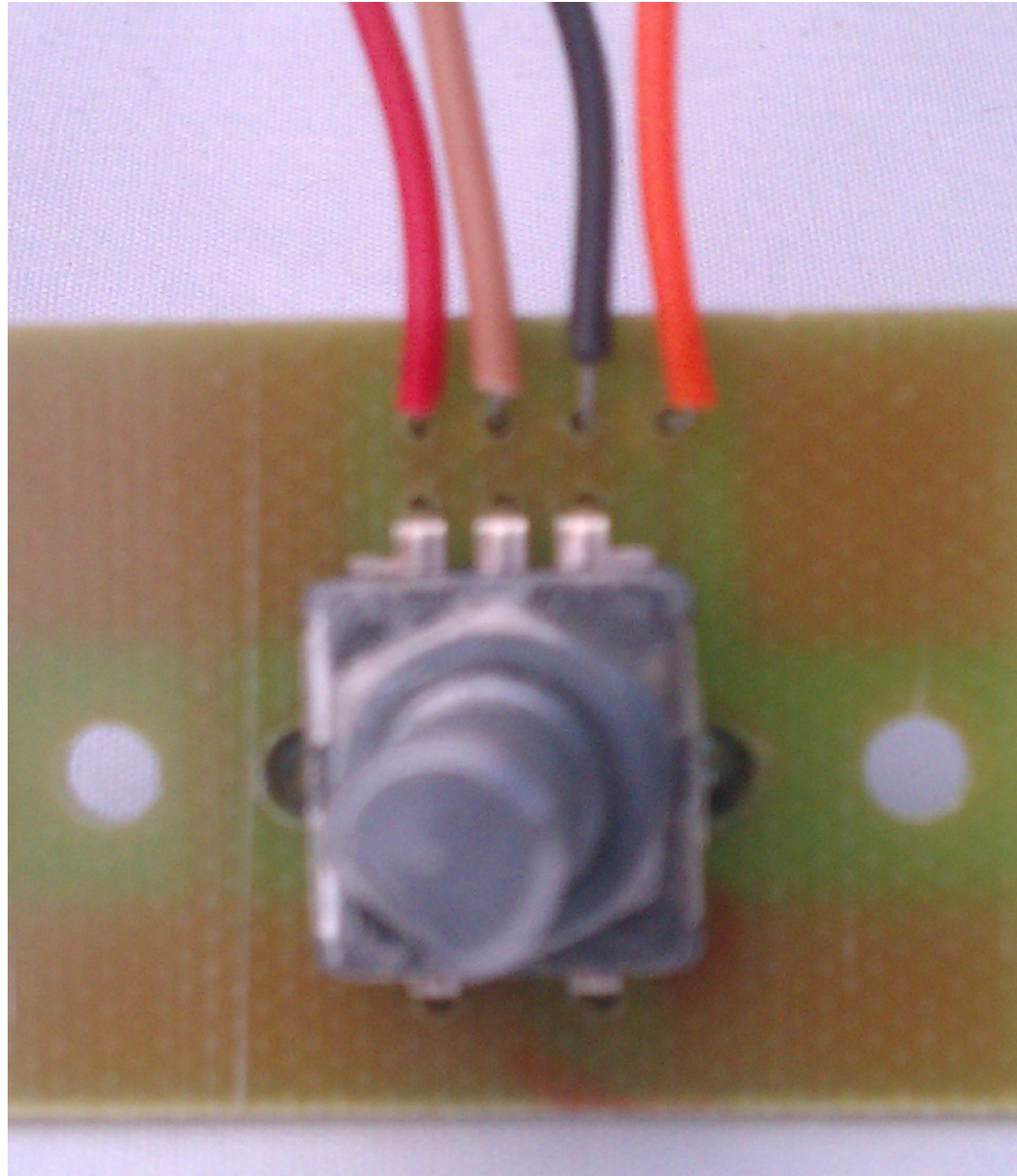
8 PINS FEMALE TO FEMALE RELIMTAE CONNECTORS 2 NOS TO UBITX



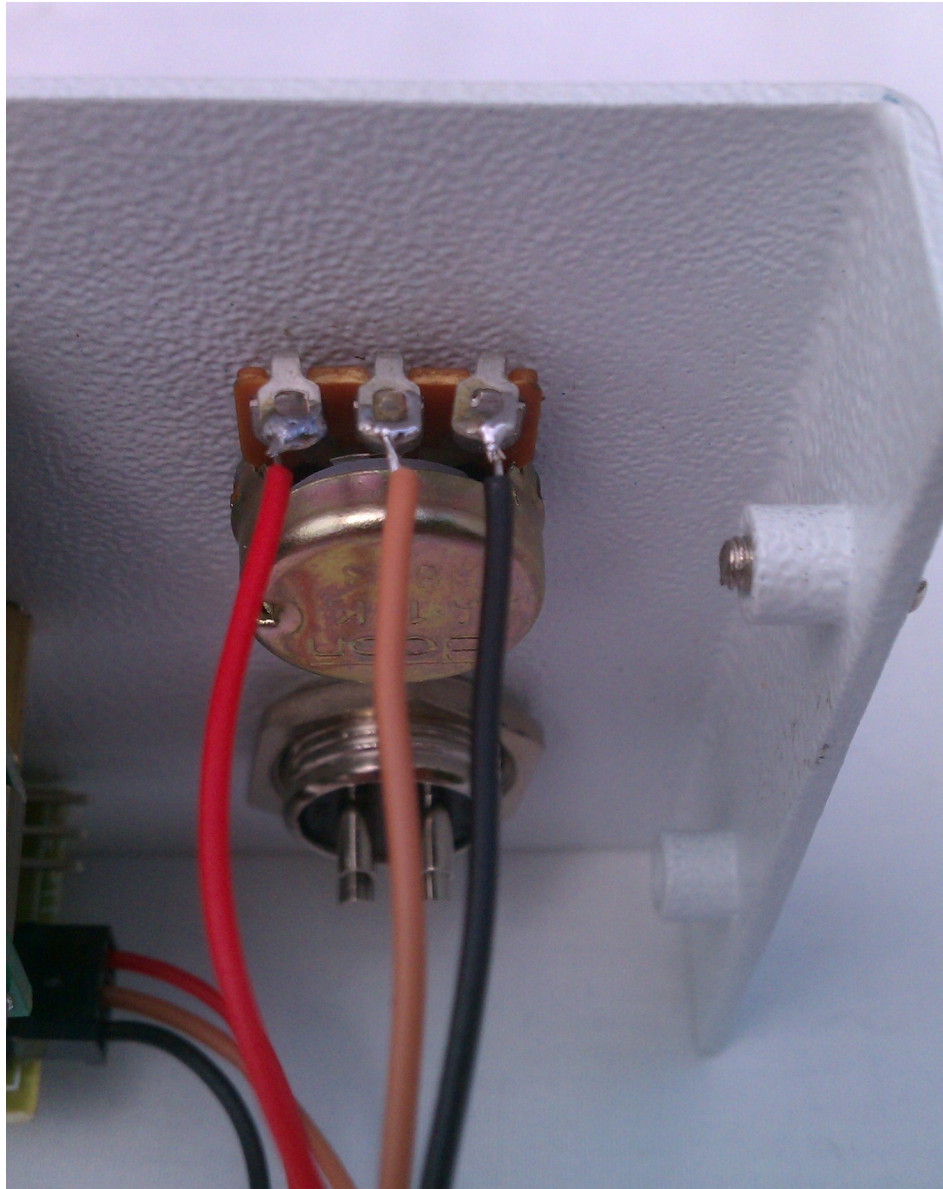
Note: Add jumper wire between pins 2 and 5 of Phones Jack



# Shaft Encoder Wiring Detail



# Volume Control Wiring Detail



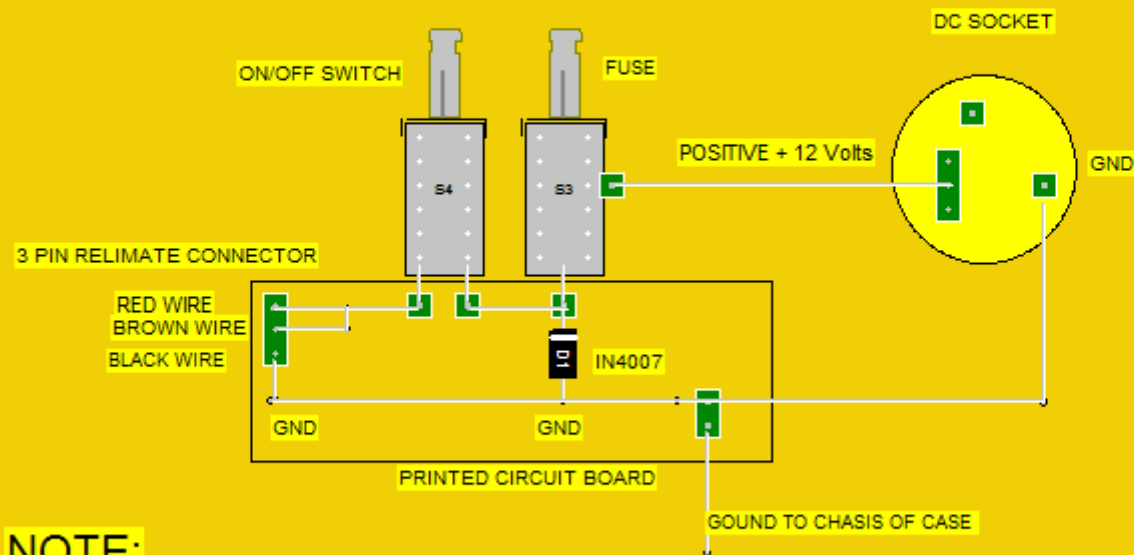


# Microphone Connector Wiring Detail



# Rear Panel Wiring

## UBITX UNIVERSAL CASE BACK PANEL POWER PCB CONNECTIONS



### NOTE:

DC Power Wiring Can be done with the board or without it by soldering wire direct to the Switch And Fuse.

If using the board care is to be taken in soldering the push to on switch, too much heat or bending the pins could damage the switch

# Committee Plans

# The Plans

- Order, Receive, and Distribute Kits and Cases
  - ECD September Club Meeting
- Hold several build sessions at the Training Ctr
  - September - October
- Encourage Experimentation and Modifications
  - Software mods, CW Filter, Digital Modes, AGC
  - Power Meter, SWR Meter, SDR Interface, etc.
- Presentations on your build and mods are encouraged!



Questions?